



# 1<sup>st</sup> Announcement



Venue: Brilliant Convention Centre, Indore

Date: 23<sup>rd</sup> - 27<sup>th</sup> Nov 2022

**Dr. (Lt General) Ved Chaturvedi**

*Patron*

**Dr. V P Pandey**  
*Organizing Chairman*

**Dr. Debashish Danda**  
*Chairman Scientific committee*

**Dr. Sanjay Dubey**  
*Treasurer*



## Conference Secretariat

**Dr. Ashish Badika**

Organizing Secretary IRACON 2022

### Address

**Arthritis & Rheumatology Centre**  
311 TBC Tower, Geeta Bhawan Square  
A. B Road, Indore (MP)-452001

### Phone

+918319378060, 0731-4971114

### Email

[iracon2022@indianrheumatology.org](mailto:iracon2022@indianrheumatology.org)



**IRACON 2022 (INDORE)**

23<sup>rd</sup>-27<sup>th</sup> November, 2022

**37<sup>th</sup> Annual Conference of  
Indian Rheumatology Association**

Indian Rheumatology ...  
**FUTURE IS NOW**

 Dear Friends,

Warm greetings from the Organizing Committee!

We extend you a very warm invitation to attend the **37<sup>th</sup> Annual conference of the Indian Rheumatology Association from 23<sup>rd</sup> to 27<sup>th</sup> November, 2022** at Brilliant Convention Centre, Indore (Madhya Pradesh).

As you all are aware, this is the biggest event of Rheumatology in Indian Subcontinent with nearly 1500 delegates attending it. IRACON is coming to Indore for first time and in Madhya Pradesh after long gap; therefore, we wish to leave no stone unturned to make this a memorable one.

Many experts from different parts of the world will be at the meeting to share the wealth of their experience. We are expecting to host the best of International and National faculty in the field of Rheumatology. You will have a unique opportunity to enrich your knowledge and share your thoughts with key opinion leaders.

Indore is the largest city and the commercial capital of the Indian state of Madhya Pradesh. It has been adjudged as the cleanest city of India for the fifth year in row. Located 190 km west of the capital city of Bhopal, it is known as the food capital of India for its mouth watering cuisine.

Late November is the perfect weather to enjoy Indore with average maximum & minimum temperature of 27°C (80°F) & 11°C (51°F).

Devi Ahilyabai Holkar International Airport (Indore) is the most prominent airport in the Madhya Pradesh. The Airport is one of the best in the country and offers good connectivity with all major cities of India & important international airports. Indore is connected by trains to all major Indian cities.

We look forward to having you with us and providing you with a memorable experience with best of science, ambience and food.

Best Wishes

Organizing Committee IRACON 2022

## Program Outline

Pre meeting workshops

IRA refresher course

Orations, Plenary lectures and keynote lectures

Walk the talk with Professors & Post-Graduate Clinic

Showcasing Indian science in Rheumatology by  
Special interest groups / IRA research cell

Intercontinental state of the art symposium

Joint Patient Doctor session

Interdisciplinary sessions

Platform presentations of free papers and poster tour

Session on machine learnings and AI (Artificial Intelligence)  
in Rheumatology - a primer

Genetics & Molecular Biology for Rheumatologists

Newer drug and biomarkers discovery session

Primary care Rheumatology

Grand round / CPC

South Asian flavour - Rheumatology in Indian subcontinent

## Don't miss the opportunity to meet the Nobel laureate!!



“Good scientists are perpetual adolescents. They never grow up.”

### Man of action - Professor Peter C. Doherty

The Nobel Prize in Physiology or Medicine 1996

PETER DOHERTY  
Nobel Prize in Physiology or  
Medicine 1996

He got delighted by the unexpected complexities that interested him. This is an opportunity to understand his unconventional thinking process, a person who loved to march at the beat of his own instinct.

Professor Peter C. Doherty was instrumental in making one of the most profound discoveries in the burgeoning field of immunology. It has given the world a clearer understanding of the intricate mechanisms at work in our bodies and its massive implications that extend to the therapeutic healing of many terrible diseases.

Hear from him on his discovery of how the immune system recognizes virus-infected cells and the role of T cells in the immune system.

His book “Their Fate is our fate” is another worth reading masterpiece where he has come up with a striking observation “Birds detect danger to our health and the environment before we do”. A point to ponder.

You will get to hear a Nobel Laureate for the first time ever in any IRACON, and that will be in IRACON 2022, Indore.



## Registration

Category	Early Bird (upto 30 <sup>th</sup> Apr 22)	Regular Upto 31 <sup>st</sup> Aug 22	Late Upto 31 <sup>st</sup> Oct. 22	Spot
IRA member	10000	13000	15500	18000
Non-member	11500	14000	18500	23000
PG Student	4000	7000	10000	13000
Accompanying person	8500	11500	15500	15500
Corporate registration	14500	17500	21500	25000
Overseas (Non SAARC Countries)	USD 290	USD 420	USD 510	USD 635
SAARC Countries	USD 215	USD 290	USD 360	USD 510

- Registration fee inclusive of GST
- Convenience fee (as per norms)
- Registration can also be done through Net banking.  
(Please send the bank transaction slip along with the registration form to the Conference Secretariat.)

Account Name : IRACON 2020

Account No.: 50200044254234

IFSC CODE : HDFC0000404

Bank Name : HDFC BANK LTD

Branch Name : Indore –Vijay nagar

City : Indore

Swift Code/BIC : HDFCINBB

## About Venue



Brilliant Convention Centre (BCC) is the first technologically advanced and state of the art convention Centre of this scale located in Indore.

BCC is just 12 km away from the Indore Airport and 6.2 Km from Indore railway station. It is located in the central business district of Indore. It boasts of top-notch facilities, and its services, beautiful interiors, high technology and it is among the best in India.

Sprawling over a 1,00,000 sq.ft. of flexible meeting spaces, it has 108 luxurious and spacious rooms.

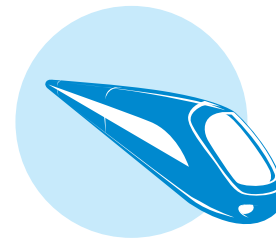
## Hospitality in Indore

Hotel	Stars
Indore Marriott Hotel	★★★★★
Radisson Blu Hotel	★★★★★
Sheraton Grand Palace	★★★★★
The Park Hotel	★★★★★
Sayaji Indore	★★★★★
Pride Hotel & Convention Centre	★★★★★
Hotel WOW & World of Winway	★★★★★
Hotel Infiniti	★★★★★
Fairfield by Marriott	★★★★★
Effotel Hotel	★★★★★
Lemon Tree Hotel	★★★★★
Sure Stay Plus By Best Western	★★★★★
Ginger Indore	★★★
Hotel Crown Palace	★★★
Hotel President	★★★
Hotel Shreemaya Residency	★★★
Hotel Shreemaya	★★★
Hotel Amar Vilas	★★★

Stars	Count
★★★★★	4
★★★★★	9
★★★	7

## How to reach Indore



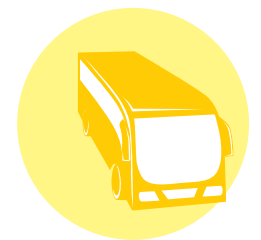
**By Train:** INDORE JUNCTION BG(code is INDB), The station that takes care of all the basic amenities of the passengers. This station is well-connected to all the major cities of country.

**By Flight:** Devi Ahilyabai Holkar Airport in Indore connects it to most of the major cities in the country. It has direct flight to Mumbai, Delhi, Ahmedabad, Hyderabad, Bengaluru, Chennai, Kolkata, Jaipur, Raipur, Nagpur and Bhopal. It also has direct flight to Dubai.



**By Cab/Car:** Can take scenic drives from nearby cities including Bhopal by car.

**Luxury Bus connectivity :** Indore offers wide range of multiple volvo bus services connecting to all the major cities of country.





## Places to visit in Indore

### Rajwada Palace

Rajwada is a historical palace in Indore city. It was built by the Holkars of the Maratha Empire about two centuries ago.



### Sarafa Bazar

Sarafa Bazaar is a jewellery market and night street food court located in central Indore. Sarafa is the only market in India which remains as a jewellery marketplace at daytime and converts itself into a street food court at night.



### Indore Museum

This is most interesting buildings in Indore. It is a treat for the people who are genuinely fascinated by the history of India and the rich civilization that flourished here in the pre historic age.



### Khajrana Ganesh Temple

Is a pilgrimage center in Indore, dedicated to Lord Ganpanti. Built during reign of Holkar dynasty. It is believed that all the wishes will be fulfilled after praying here.



### Krishnapura Chhatris

Is an important architectural heritage of Indore. The structures were built by the Holkars as cenotaphs to house the remains of the dynasty's rulers, leading to them also being known as the Holkar Chhatris



### Lal Bagh Palace

Palace was built by Maharaja Shivaji Rao Holkar in the year 1886-1921. The beautiful Palace is situated in the outskirts of the Indore city. It is a three storey building standing tall on the banks of the River Khan.



## Other places to visit in MP

### Malwa Region Golden Triangle: Ujjain, Omkareshwar, Mandu

#### Ujjain (55 Km from Indore)

Ujjain, considered to be one of the holiest cities of India, is an ancient city situated on the eastern bank of the Shipra River in the Malwa region



#### Omkareshwar (77 Km from Indore)

Omkareshwar is a Hindu temple dedicated to God Shiva. It is one of the 12 revered Jyotirlinga shrines of Shiva



#### Mandu (97 Km from Indore)

Mandu is an ancient fort city in the central India



#### Maheshwar (95 Km from Indore)

Situated on the banks of river Narmada, Maheshwar appeals to both, the pilgrim as well as the tourist in you. Maheshwar is home to the unique and beautiful maheshwari saris and fabric. This historic town represents the beauty of nature.



#### Bhopal (194 Km from Indore)

It's one of India's greenest cities. There are two main lakes, the Upper Lake and the Lower Lake. On the banks of the Upper Lake is Van Vihar National Park, home to tigers, lions and leopards



#### Sanchi Stupa (238 Km from Indore)

The Great Stupa at Sanchi is one of the most important Buddhist monuments representing Buddhist art and architecture. Located at Sanchi Town, close to the capital city of Bhopal, this Stupa is the oldest stone structure in India



## Other places to visit in MP

### Khajuraho (566 Km from Indore)

These Hindu temples and Jain temples in Chhatarpur district of Madhya Pradesh are UNESCO's World Heritage Sites.



### Kanha National Park (613 Km from Indore)

One of the largest parks in Madhya Pradesh where the majestic royal Bengal tigers are found in good numbers. The Park is respected globally for saving the Barasingha from near extinction.



### Bandhavgarh National Park

(644 Km from Indore)

This biodiverse park is known for its large population of royal Bengal tigers, especially in the central Tala zone. Other animals include white tigers, leopards and deer.



## Terms & Conditions

1. Registration is compulsory for all types of participation (attending the conference, workshops, paper presentation, delivering talk, chairing a session and panel discussions).
2. Registration fees includes: delegate kit, admission to scientific sessions, trade exhibition, inaugural function, Lunch for 3 days and banquet dinners.
3. Receipt of registration needs to be preserved and presented at the venue registration counter.
4. Cancellation can be done till 30<sup>th</sup> September 2022, 25% of registration fee will be deducted as processing charges. Refund will be remitted within 4-6 weeks after the conference.
5. No refunds will be processed for cancellation after 30<sup>th</sup> September 2022

ARTHRITIS  
se **aaraam**

*Relief*  
has many  
names

**HCQS**<sup>®</sup>  
Hydroxychloroquine

**TFCT-NIB**<sup>®</sup>  
Tofacitinib

**Folitrax**<sup>®</sup>  
Methotrexate

**APRAIZE**  
Apremilast

**Saaz**<sup>®</sup>  
Sulfasalazine

**MMF**  
Mycophenolate salt

**Lefno**<sup>®</sup>  
Leflunomide

**Tacva**  
Tacrolimus

**Igurati**  
Iguratimod

**AZR**  
Azathioprine

**Etova**<sup>®</sup>  
Etodolac

**Adalipca**  
Adalimumab

**Rituxipca**  
Rituximab